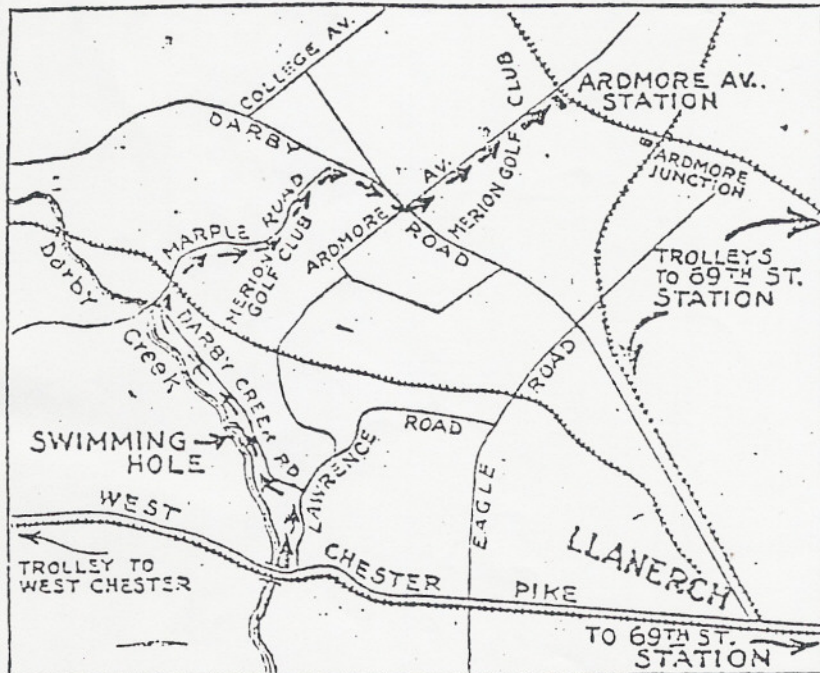
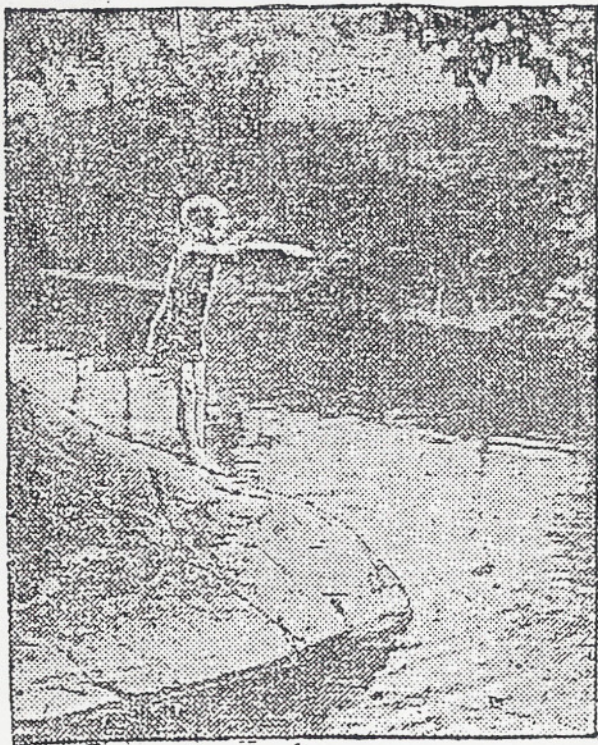


DARBY CREEK VALLEY A HIKER'S PARADISE.



A Winding Road Along the Darby Creek from the West Chester pike offers a sylvan background for this week's hike. Darby Creek can be reached by the West Chester trolleys from 69th st. The hike starts at Lawrence road. Upper left: Billy Scott, of Oakmont, Pa., takes a plunge into the old swimming hole near the pike. Upper right: The Lawrence homestead with the original log cabin said

to be over 240 years old. The lower left shows a map of the hike which leads along the creek, up Marple road to Darby road and thence to the Ardmore av. Station of the Philadelphia and Western trolley. A view of the Darby Creek is shown in the lower right. The hike as outlined covers six miles.